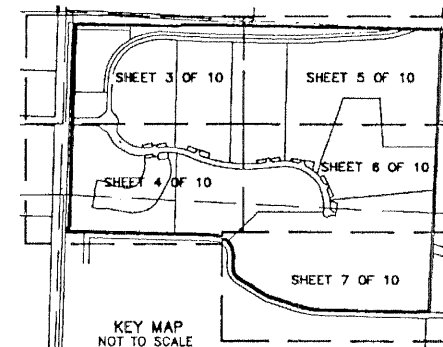
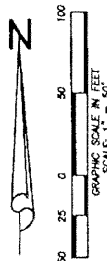


FRENCHMAN'S RESERVE PCD - PLAT ONE

BEING A PARCEL OF LAND LYING IN SECTIONS 31,
TOWNSHIP 41 SOUTH, RANGE 43 EAST, CITY OF PALM BEACH
GARDENS PALM BEACH COUNTY, FLORIDA.

AUGUST, 2001 SHEET 9 OF 10



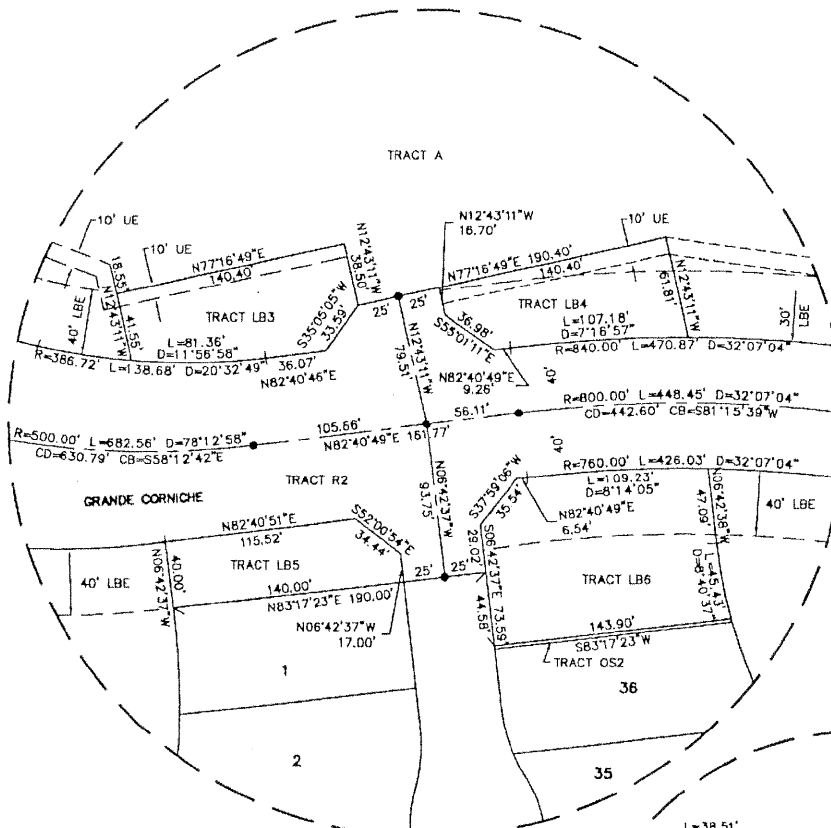
19

STATE OF FLORIDA
COUNTY OF PALM BEACH
THIS PLAT WAS FILED FOR
RECORD AT _____ M.
THIS _____ DAY OF _____
A.D. 2001 AND DULY RECORDED
IN PLAT BOOK _____ ON
PAGE(S) _____ AND _____

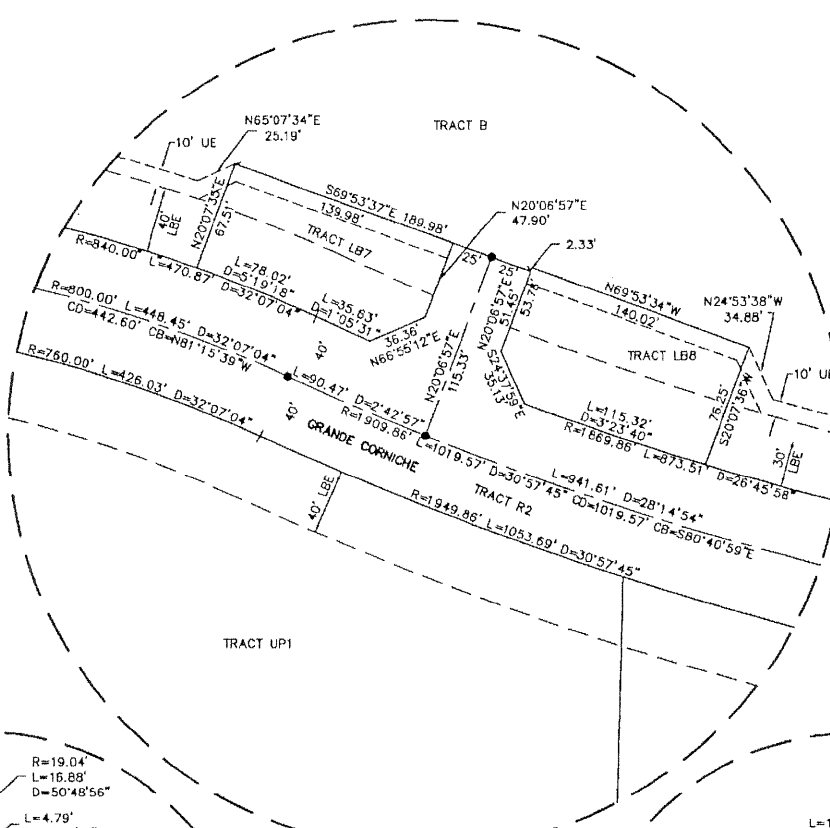
DOROTHY H. WILKEN
CLERK CIRCUIT COURT

BY: _____
DEPUTY CLERK

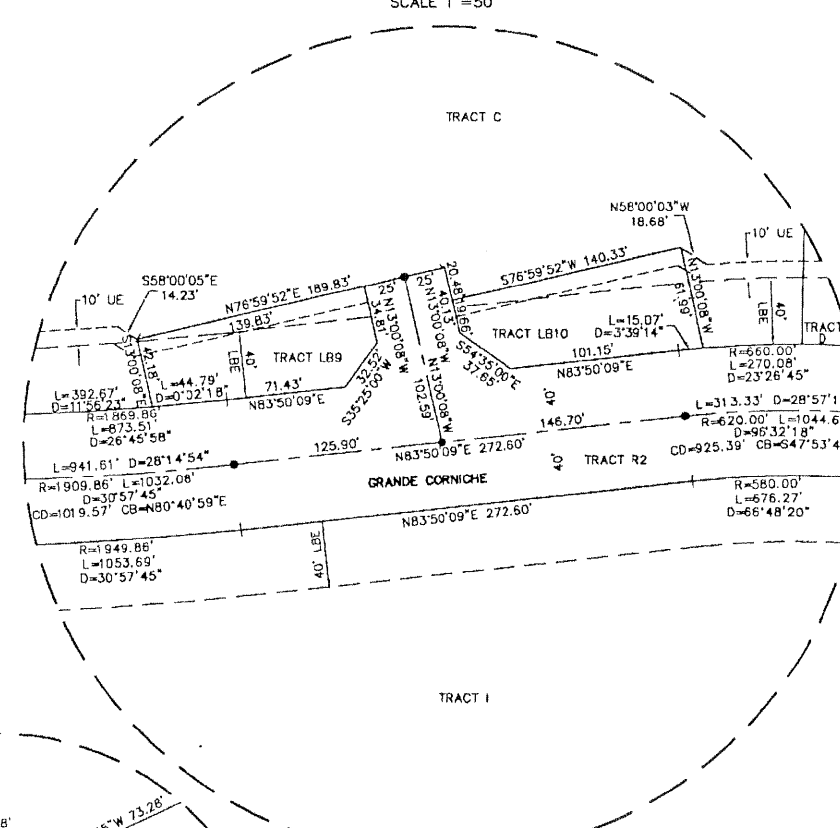
DETAIL 1
SCALE 1"=50'



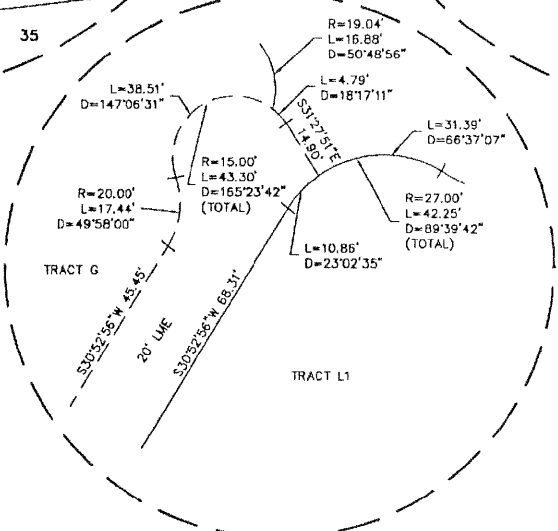
DETAIL 2
SCALE 1"=50'



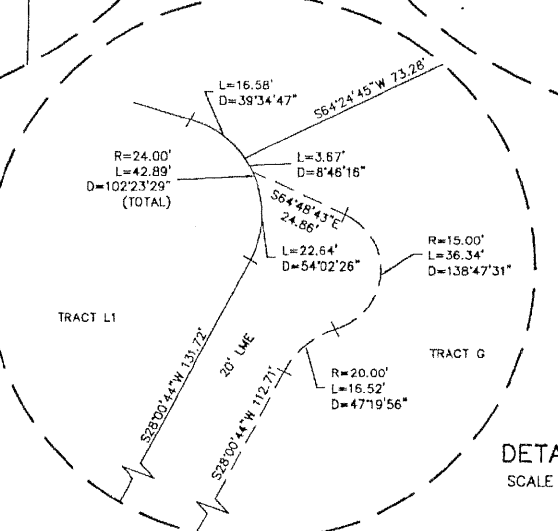
DETAIL 3
SCALE 1"=50'



DETAIL 7
SCALE 1"=20'



DETAIL 8
SCALE 1"=20'



- LEGEND:**
- CL = CENTERLINE
 - WSE = WATER AND SEWER EASEMENT
 - PRCO = PALM BEACH COUNTY
 - LAE = LIMITED ACCESS EASEMENT
 - LRE = LANDSCAPE BUFFER EASEMENT
 - LSE = LIFT STATION EASEMENT
 - (C) = CALCULATED
 - CMR = COMMISSIONERS' MINUTES BOOK
 - DE = DRAINAGE EASEMENT
 - DB = DEED BOOK
 - FND = FOUR
 - FPL = FLORIDA POWER & LIGHT
 - IP = IRON PIPE
 - IRC = IRON ROD WITH PLASTIC CAP
 - LB = LICENSE BUSINESS
 - LS = LICENSE SURVEY
 - (M) = MEASURED
 - MON = MONUMENT
 - ORB = OFFICIAL RECORD BOOK
 - (P) = PLAT
 - PB = PLAT BOOK
 - PBB = POINT OF BEGINNING
 - POC = POINT OF COMMENCEMENT
 - PRM = PERMANENT REFERENCE MONUMENT
 - R/W = RIGHT-OF-WAY
 - RFB = ROAD PLAT BOOK
 - (S) = SURVEY
 - UE = UTILITY EASEMENT
 - PCP = PERMANENT CONTROL POINT
 - = SET 4"x4" CONCRETE MONUMENT "LBY7055"

Wantman Group, Inc.
Engineering ♦ Surveying ♦ Mapping
901 NORTHPOINT PARKWAY, SUITE 204
WEST PALM BEACH, FL 33407
(561) 687-2220 phone (561) 687-1110 fax
CERT No. 6091 - LB No. 7055

CAD	K:\TOLLBROS\FRENCHMAN\DWG\218PLAT1			
REF				
FLD	RP/AB	FB. 000	PG. 00	JOB 01-218
OFF	AJP/MRJ			DATE 05/16/01
CKD	RBP	SHEET 9 OF 10	DWG 218PLAT1	